

BraillePoint™

Braille Dot Measurement Tool

Global Vision's BraillePoint™ is an easy to use Braille dot QC tool perfect for measuring Braille dot height and verifying dot placement. With BraillePoint™, users can ensure the precision of all embossed and screen printed Braille found on cartons and labels.

BraillePoint™ uses the latest electronic measurement technologies to measure Braille dot height directly. Unlike scanner and camera based measurement systems that are dependent on dot shadows and complex algorithms, BraillePoint™ is capable of providing the most accurate results.

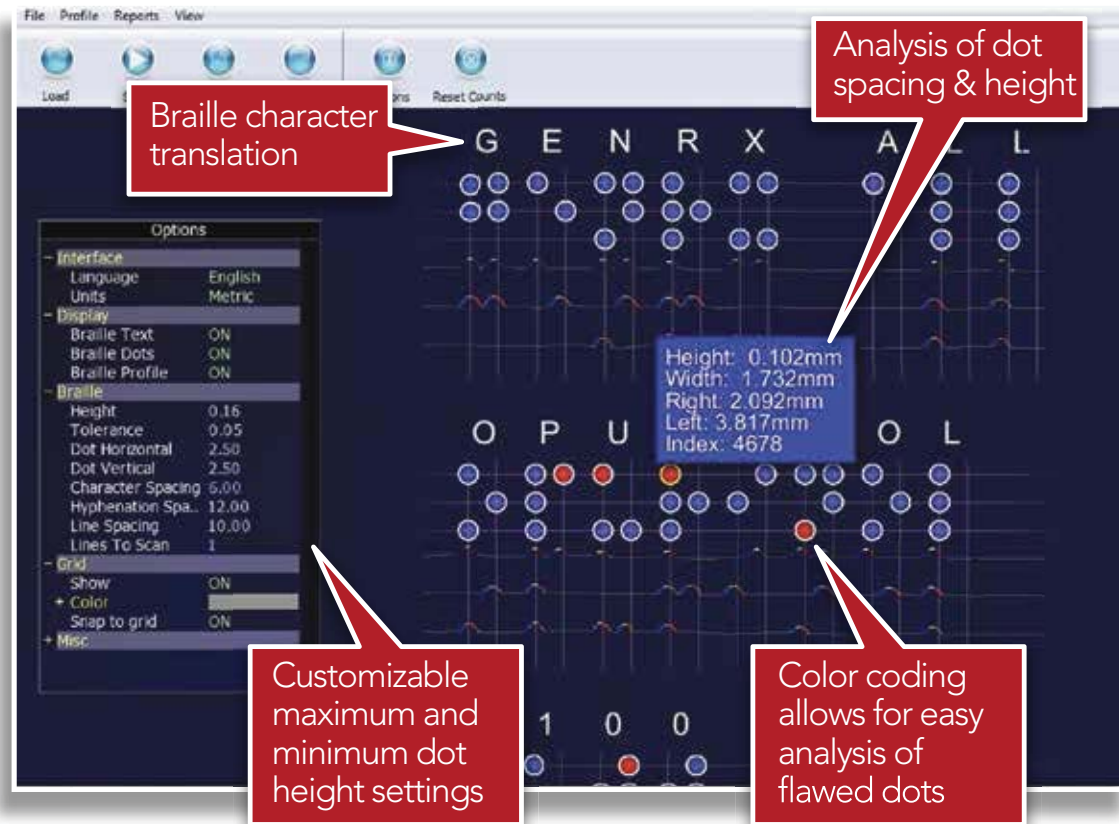
With BraillePoint™, you can be rest assured that all Braille is accurate, readable and meets international standards, while eliminating manual checking, and reducing inspection times.

- > Reduce inspection times.
- > Ensure accuracy & quality of Braille text.
- > Ensure compliance with international standards.



BraillePoint™

Braille Dot Measurement Tool



BraillePoint™ Features:

- > Analysis of dot spacing & height
- > Braille character recognition
- > Extensive reporting, detailing pass/fail for each Braille dot
- > Color coding allows for easy analysis of flawed dots
- > Customizable maximum and minimum dot height settings
- > Superior sample scan times
- > Inspection setup details easily saved
- > 21 CFR Part 11 / Annex 11 compliant & validation available

Hardware Specifications:

CPU Speed	64 bit Intel 2.0 GHZ dual core
Memory	6.0 GB RAM
Free Space	160 MB Hard Drive
Monitor Size	24 inch widescreen
Monitor Resolution	1920 X 1080
Printer	Optional
Unit Dimensions	21" x 20" x 10"
Braille Scan Area	8.5" x 11" (A4)

Software Specifications:

Operating System	Windows 7
User Access Level	Administrator, User
PDF Support	PDF viewer for reporting



GLOBAL VISION
Automated Proofreading Solutions